

PLANTING SCHEDULES

Tree planting - typical species list

| Species | Height (m) | Min. clear stem (m) | Form | Girth | Root condition | Mature height (m) |
|--------------------------|------------|---------------------|------------|-------|------------------|-------------------|
| Acer campestre 'Elsrijk' | 4.5-6.0 | 2.0 | SM | 20-25 | Container/airpot | 10-12m |
| Alnus glutinosa | 4.0-4.5 | 2.0 | EHS | 16-18 | Container/airpot | 10-20m |
| Amelanchier lamarckii | 2.5-3.0 | n/a | Multi-stem | n/a | Container/airpot | 4-6m |
| Larix decidua | 4.0-4.5 | 2.0 | EHS | 16-18 | Container/airpot | 10-20m |
| Pinus sylvestris | 4.5-6.0 | 2.0 | SM | 20-25 | Container/airpot | 10-20m |
| Prunus x schmittii | 4.5-6.0 | 2.0 | SM | 20-25 | Container/airpot | 8-10m |
| Salix caprea | 2.5-3.0 | n/a | Multi-stem | n/a | Container/airpot | 6-10m |
| Sorbus aria 'Lutescens' | 4.0-4.5 | 2.0 | EHS | 16-18 | Container/airpot | 8-12m |

Parkland planting - typical species list

| Species | Height (cm) | Pot size (L) | Density (/m ²) |
|---------------------------------------|-------------|--------------|----------------------------|
| Allium hollandicum 'Purple sensation' | Bulb | n/a | 10 |
| Anemanthele lessoniana | 40-60 | 3L | 4 |
| Armeria maritima | 10-20 | 1L | 8 |
| Leymus arenarius | 40-60 | 3L | 4 |
| Sesleria autumnalis | 40-60 | 3L | 4 |
| Stipa tenuissima | 40-60 | 3L | 4 |
| Vinca minor | 10-20 | 1L | 8 |

Garden planting - typical species list

| Species | Height (cm) | Pot size (L) | Density (/m ²) |
|---------------------------|-------------|--------------|----------------------------|
| Hebe albicans | 20-40 | 2L | 5 |
| Hebe 'Great Orme' | 20-40 | 2L | 5 |
| Hedera helix | 10-20 | 1L | 8 |
| Lonicera nitida 'Maigrun' | 20-40 | 2L | 5 |
| Olearia x haastii | 40-60 | 3L | 4 |
| Perovskia atriplicifolia | 40-60 | 3L | 4 |
| Stipa tenuissima | 40-60 | 3L | 4 |
| Vinca minor | 10-20 | 1L | 8 |

Podium planting - typical species list

| Species | Height (cm) | Pot size (L) | Density (/m ²) |
|-------------------------------|-------------|--------------|----------------------------|
| Achillea 'Petra' | 20-40 | 2L | 5 |
| Achillea ptarmica 'The Pearl' | 20-40 | 2L | 5 |
| Anemanthele lessoniana | 40-60 | 3L | 4 |
| Armeria maritima | 10-20 | 1L | 8 |
| Leymus arenarius | 40-60 | 3L | 4 |
| Muscari armeniacum | Bulb | n/a | 10 |

Raingarden planting - typical species list

| Species | Height (cm) | Pot size (L) | Density (/m ²) |
|------------------------|-------------|--------------|----------------------------|
| Allium sphaerocephalon | Bulb | n/a | 8 |
| Iris siberica | Bulb | n/a | 8 |
| Sesleria autumnalis | 40-60 | 3L | 4 |
| Stipa tenuissima | 40-60 | 3L | 4 |
| Vinca minor | 10-20 | 1L | 8 |

Hedge planting

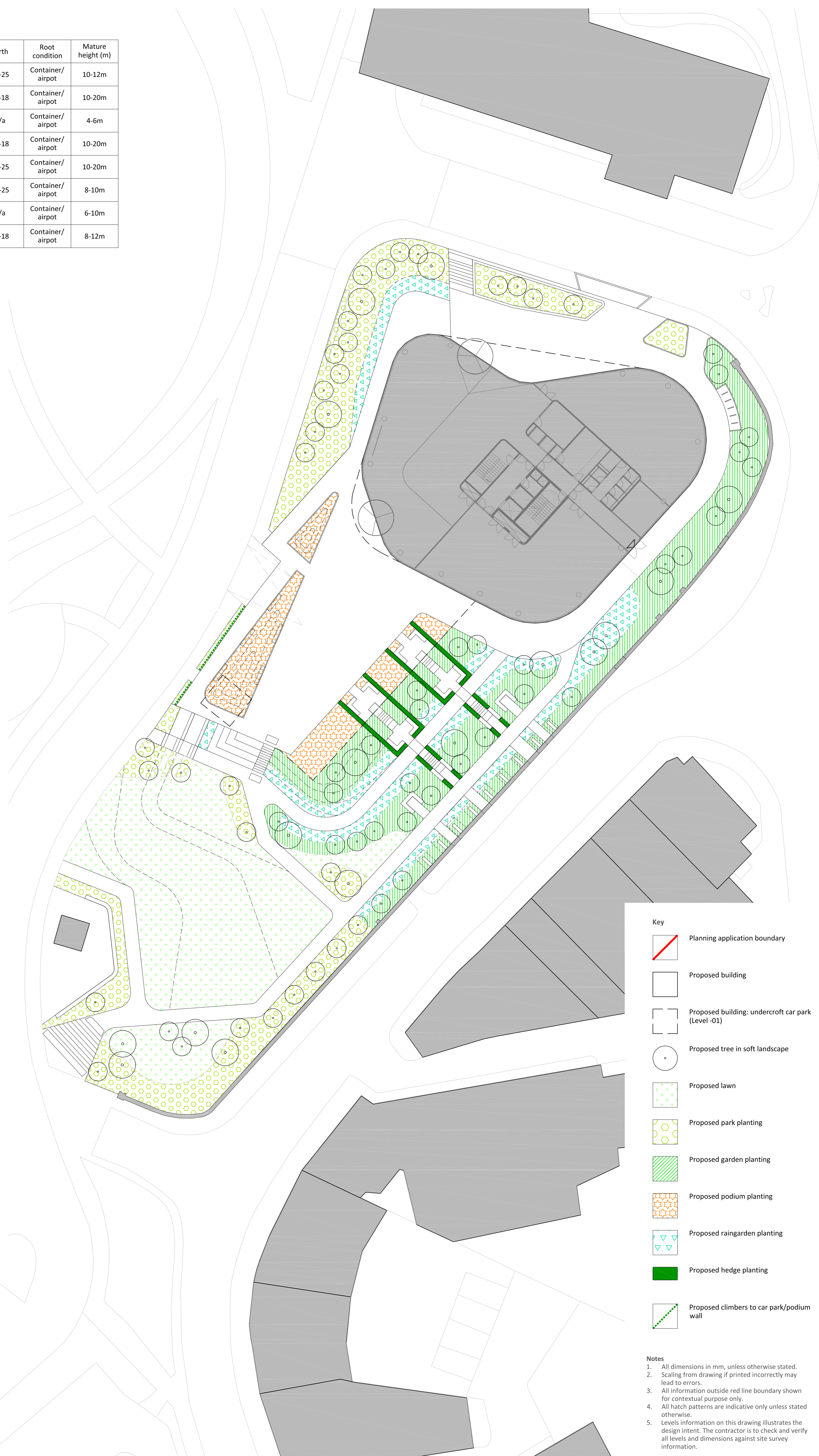
| Species | Height (cm) | Pot size (L) | Density |
|---------------------------|-------------|--------------|----------------|
| Lonicera nitida 'Maigrun' | 80 | 3L | 4/linear metre |

Climber planting

| Species | Height (cm) | Pot size (L) | Density |
|--------------|-------------|--------------|----------------|
| Hedera helix | 10-20 | 1L | 5/linear metre |

Lawn turf

| Product | Supplier |
|-------------------|------------------------|
| LT7 Festival turf | Lindum Turf or similar |

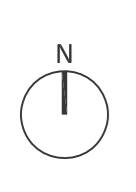
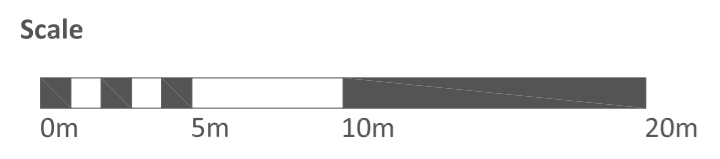


Key

- Planning application boundary
- Proposed building
- Proposed building: undercroft car park (Level -01)
- Proposed tree in soft landscape
- Proposed lawn
- Proposed park planting
- Proposed garden planting
- Proposed podium planting
- Proposed raingarden planting
- Proposed hedge planting
- Proposed climbers to car park/podium wall

Notes

- All dimensions in mm, unless otherwise stated.
- Scaling from drawing if printed incorrectly may lead to errors.
- All information outside red line boundary shown for contextual purpose only.
- All hatch patterns are indicative only unless stated otherwise.
- Levels information on this drawing illustrates the design intent. The contractor is to check and verify all levels and dimensions against site survey information.



03.12.20 Planning
Date Description of revision

AF AF AP P01
Drawn Checked Approved Revision

Drawing number
RFM-XX-00-DR-L-0005
© re-form landscape architecture limited

Scale
1:250
Project
GLASSWORKS, HARTON QUAYS, SOUTH SHIELDS
RF20-834
Client
MUSE

Revision
P01
Document title
PLANTING STRATEGY PLAN

re-form
landscape architecture
Tower Works, Globe Road,
Leeds LS11 5QG
T: +44 (0)113 2454695
E: info@re-formlandscape.com
W: re-formlandscape.com